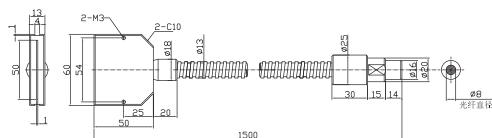


线形光纤传光束

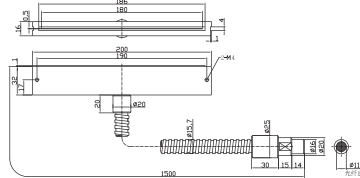
- 线形出光设计；
- 高强度、无缝隙均匀的线形照明；
- 可搭配柱面聚光透镜使用, 将光强进一步提升；
- 选用高透光率的光纤材料制作, 实现紫外到红外光纤的线性分布；
- 提供 OEM 和 ODM 服务；



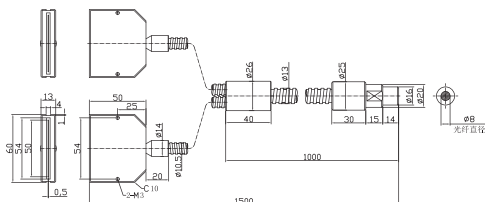
POFC-L50H-1500-F1
 GOFCL50H-1500-F1



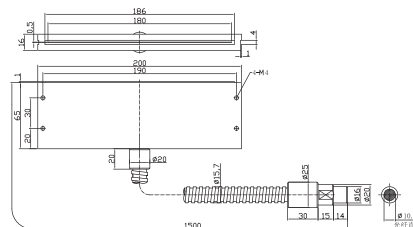
POFC-L180H-1500-F1



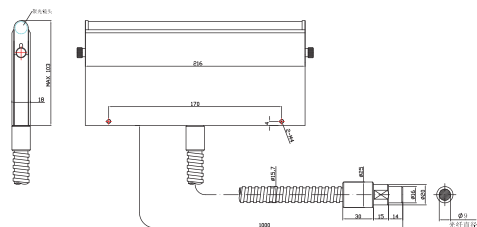
POFC-L50H-1500-F2
 GOFCL50H-1500-F2



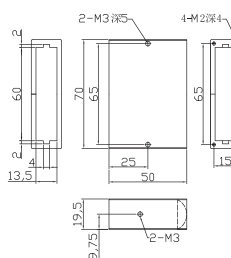
GOFCL180H-1500-F1



POFC-L200H-1000-F1L
 GOFCL200H-1000-F1L



L-50



POFC-L1260H-2000-F7

